



HOSA, TA

SECTION A

Revised July 2010

This section contains:

- HOSA, Texas Association
- HOSA, TA History
- Membership Categories
- HOSA Motto, Mission, Creed, Emblem
- HOSA Organizational Chart
- HOSA, TA Leadership Schedule
- Map of Texas Areas
- HOSA Affiliation Process
- Texas HOSA On Line Registration & Instructions

TEXAS, HOSA ASSOCIATION

A powerful curricular program of student led activities designed to develop future leaders for the health care system. HOSA participation provides opportunities for students to:

- develop effective leadership qualities and skills;
- enhance communication skills;
- develop critical thinking and problem-solving skills;
- build self-esteem through individual and group achievement;
- participate in community service activities;
- develop character and responsible citizenship traits;
- set goals for life long learning and make realistic career choices;
- network with health care professionals and peers who have similar goals;
- and access student scholarship opportunities.

Each school offering health science in Texas is expected to offer students the opportunity to participate in HOSA.

The Health Science teacher serves as the HOSA advisor. The leadership role of the local advisor is critical to the success of HOSA programs and student opportunities. An effective advisor has a positive attitude, teaches students by example, and generates enthusiasm by challenging students to do their best in all situations. Student success is directly proportional to the encouragement, resourcefulness, and sponsorship of the HOSA Advisor.

HOSA, TA HISTORY

The Texas Association of Health Occupations Students of America began in 1972 as a state organization of students enrolled in Texas health occupations education programs. Groundwork for the formation of the Texas Association of Health Occupations Students began with a survey of interested students in 1970-71. This survey polled all of the students enrolled in secondary health occupations training programs in Texas. The students, most of them members of the Vocational Industrial Clubs of America, Texas Association, were asked to give their opinions on the formation of a new organization limited in membership to students enrolled in health occupations education. The majority of students were in favor of forming the new organization.

The results of this survey were read to coordinators of health occupations programs in an annual in-service workshop in San Antonio during July 1971. A steering committee was appointed to investigate, make recommendations, and develop a framework for the new organization. This committee was directed to report to health occupations students in the spring of 1972, and develop a mechanism for the new organization to be initiated in the 1972-73 school year. Using recommendations from students, educational administrators, and advisory committee members, the committee developed a proposed set of bylaws. They were presented to health occupations students attending the VICA state meeting in Dallas, on April 22, 1972. Bylaws were adopted by the students and a name for the organization was selected. Plans were also announced for a leadership conference to be held in May 1972. Elbert Marcom, Director of Health Occupations Education, Texas Education Agency, appointed Catherine Junge to serve as State Advisor for the new organization.

The leadership conference was held at Bastrop, Texas, May 19-20, 1972. Two junior students and their coordinator from each of the 53 health occupations programs in Texas were invited to attend. The purpose of the conference was to develop guidelines for the new organization and to elect state officers to serve for 1972-73. As an indication of the enthusiasm generated by the "Bastrop Happening", 42 out of the 74 students attending the conference were interested in running for office. These delegates also helped organize and conduct area leadership conferences for local chapter officers in October and November of 1972.

An Executive Council Meeting was held in August, 1972 at Burnet, Texas, to consider ideas regarding the scope and direction of the organization. This meeting was attended by seven elected state officers, two alternates, Catherine Junge, Elbert Marcom, two health occupations consultants, Texas Education Agency representatives, four local chapter advisors, and a Texas Association for Careers in Health representative. The name Texas Association of Health Occupations Students was chosen by a majority of the members. The acronym TAHOS was pronounced Tejas, for the Tejas Indians from which Texas derived its name.

Statewide membership as of December 1972 totaled 68 chapters with 1,870 members. The first state meeting was held in April 1973 in Austin. This meeting included competitive activities, election of state officers for 1973-74, the organization of four area divisions and election of area officers for 1973-74, and an awards banquet.

In November 1975, representatives from TAHOS met with persons from five other states having a health occupations student organization. These states were Alabama, New Jersey, New Mexico, North Carolina, and Oklahoma. They took the first steps toward forming the national student organization. A Constitutional convention was scheduled for November in the bicentennial year of 1976. Delegates, advisors, and observers met in Arlington, Texas November 17-19, 1976, for the Constitutional Convention. The delegates adopted Bylaws to form Health Occupations Students of America (HOSA) and elect the first National HOSA officers.

In May 1978, the first National HOSA Convention was held in Oklahoma City, Oklahoma. The organization had grown to include representatives from 17 states. Highlights of the convention included the election of new National officers, initiation of several leadership competitive events, and an awards banquet.

In March 1979, at the TAHOS State Convention in Austin, Texas, the delegates voted to amend their bylaws to comply with the national organization's name. Therefore, the name of the organization was officially changed to Health Occupations Students of America, Texas Association (HOSA, TA).

1995-1996 National HOSA President was Gwynne Jurries from Brenham, Texas.

1998-1999 National HOSA President was Lowell Doringo from Houston, Texas.

2008-2009 National HOSA President was Luis Baez from Houston, Texas.

HOSA, TA has the largest state membership with over 18,600 members for 2010.

HOSA information and resources can be found on the HOSA, TA web site or National HOSA.

<http://www.texashosa.org>
www.hosa.org

MEMBERSHIP

Active HOSA members shall be secondary or postsecondary/collegiate students, who have an interest in health science technology education and/or planning to pursue, or pursuing a career in the health professions. Active members may serve as voting delegates, run for office, and participate in competitive events. Other types of membership include professional, alumni, and honorary life, alumni direct.

LEVELS IN HOSA

LEVEL I: Local Chapter

Local chapters are composed of students who have an interest in a health science technology education program. Students pay annual affiliation fees for state and national membership. Local chapters elect officers and develop a program of work that encourages members to participate in leadership development, community service activities, professional programs, and social events. Local chapter members attend area fall leadership conferences. Spring area conferences provide students an opportunity to participate in area/state/national competitive events. Affiliated chapters may have two voting delegates per chapter at the area spring leadership conference and one voting delegate per chapter at the state leadership conference.

LEVEL II: State Association

HOSA, TA is endorsed by the Texas Education Agency. A Secondary and post secondary advisor are appointed by the HOSA, TA Board of Directors. The state organization is led by a student executive council of state officers and area presidents. HOSA, TA is managed by a group of elected area advisors and the Board of Directors. The Texas association is divided into seven geographical areas. Two members from each chapter serve as voting delegates to the Spring Area Leadership Conference. One member from each chapter serves as a voting delegate at the State Leadership Conference. State officers serve as voting delegates at the National Leadership Conference.

LEVEL III: National Organization

State associations affiliate with the national organization, which is sponsored by the U.S. Department of Education. Individual members must affiliate with state and national HOSA. The HOSA, Inc. corporate body is composed of one representative from each state association. It is governed by a Board of Directors. The elected national officers form an executive council to conduct the business of the organization. These national officers are elected by voting delegates from state associations.

THE HOSA MOTTO

“The Hands of HOSA Mold the Health of Tomorrow”

HOSA MISSION

To enhance the delivery of compassionate, quality health care by providing opportunities for knowledge, skill and leadership development of all health occupations education students, therefore helping the students to meet the needs of the health care community.

HOSA CREED

- I BELIEVE in the Health Care Profession.
- I BELIEVE in the profession for which I am being trained; and in the opportunities which my training offers.
- I BELIEVE in education.
- I BELIEVE that through education I will be able to make the greatest use of my skills, knowledge, and experience in order to become a contributing member of the health care team and of my community.
- I BELIEVE in myself.
- I BELIEVE that by using the knowledge and skills of my profession I will become more aware of myself. Through fulfilling these goals, I will become a more responsible citizen.
- I BELIEVE that each individual is important in his or her own right; therefore, I will treat each person with respect and love. To this end, I dedicate my training, my skills, and myself to serve others through HEALTH OCCUPATIONS STUDENTS OF AMERICA.

THE HOSA EMBLEM

The circle represents the continuity of health care; the triangle represents the three aspects of humankind well-being: social, physical and mental; and the hands signify the caring of each HOSA member.

The background of the outer circle is maroon. The letters in the circle are medical white. The triangle is navy blue, and the hands, figure, and the "HOSA" in the triangle are medical white. The area around the triangle is also medical white. The "Founded 1976" is navy blue.

HOSA SUPPLY SERVICE

The official supplier of HOSA emblematic materials is Awards Unlimited, Inc. A current catalogue may be obtained by contacting:

Awards Unlimited, Inc.
1935 "O" Street
Lincoln, NE 68510
1-800-950-3553
www.awardsunlimited.com

Copyright Warning Statement:

PURCHASE

All emblematic materials are copyrighted and can be purchased only from the HOSA Supply Service. HOSA emblematic materials are sold only to affiliated HOSA groups. Legal counsel will be used to halt illegal use of the HOSA, Inc, emblem and/or copyrighted materials.

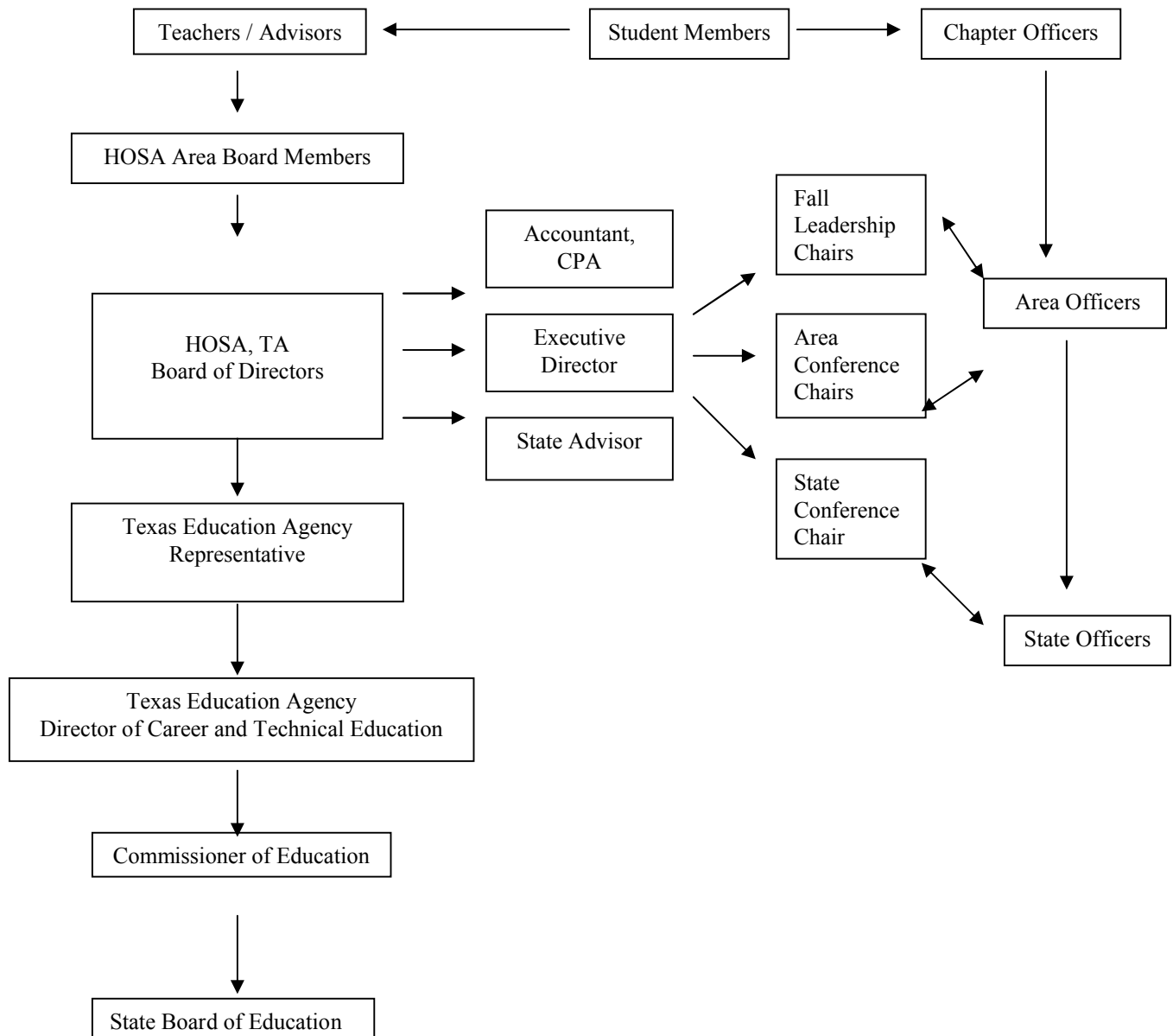
USE OF EMBLEMATIC MATERIALS BY CHAPTERS AND STATES

If the HOSA emblem is reproduced, it shall be an exact replica.

- a. Members and advisors in good standing may use the emblem, including the name, motto, creed and emblem.
- b. Local chapters and state associations may use the emblem on materials which have public relations value. Chapters and states may give permission to civic groups and organizations to reproduce and use the HOSA emblem when they are helping to interpret HOSA through non-competitive activities.
- c. The HOSA emblem and name may be used for fund raising projects which are sponsored by local chapters and state associations. The name of the local chapter or state association shall be spelled out on the above materials so that it will not give the impression that the fund raising project or programs for which they are used are nationally sponsored.

Source: HOSA, INC.
Policies and Procedures Manual
Revised Edition Jan 8, 1999

HOSA,TA and Texas Education Agency Organizational Chart



The Commissioner or Designee shall have the authority to veto any proposed action of the Board of Directors. This is to assure that actions are consistent with Texas Law and the State Board of Education rules for the conduct of all educational programs in Texas.

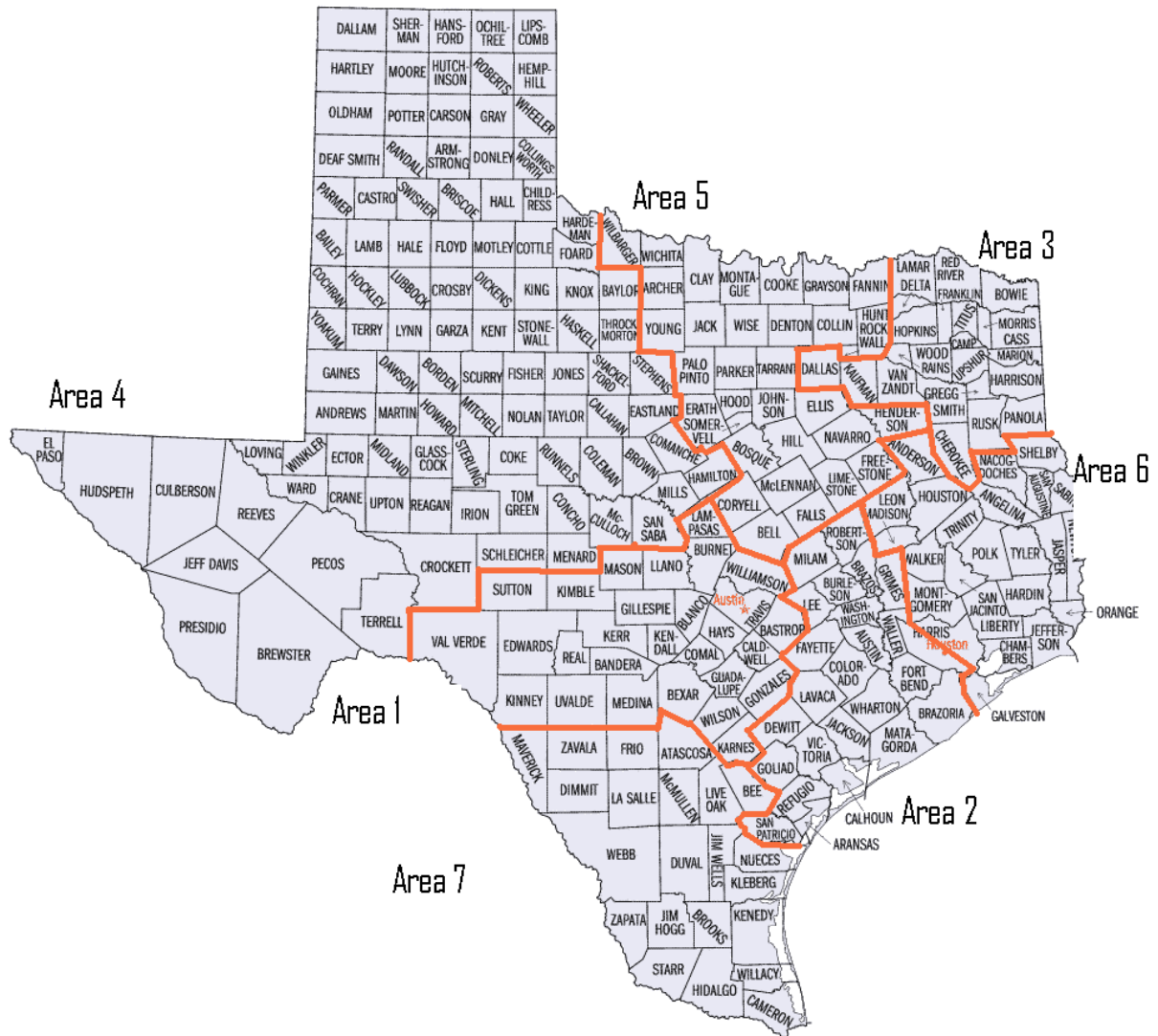
HOSA, TA BOARD OF DIRECTOR LEADERSHIP SCHEDULE

| AREA | Senior Board Member | Junior Board Member | Election |
|-----------------|--|---|---|
| President | Becky Saba Richardson High School | | Elected July, 2009 |
| President Elect | Theodora Justice School of Health Profession At Townview | | Elected July 2010 |
| Past President | Debbie Zinsmeister Health Careers High School | | Elected July, 2008 |
| Secretary | Jane Torrie Byron Nelson High School | | Elected July, 2010 |
| I | Juanita Soto Akins High School | Elizabeth Stevenson Burnet High School | Elect new Junior Board member July 2011 |
| II | Karmen Genzer Friendswood High School | Regina Jackson DeBaKey High School | Elect new Junior Board Member July 2011 |
| III | Annette McGuffee Robert E. Lee High School | Shari Kelton Duncanville High School | Elect new Junior Board Member July 2011 |
| IV | Griselda Menchaca Lakeview High School | Cynthia Jabalie Silva Health Magnet | Elect new Junior Board Member July 2011 |
| V | Jane Torrie Byron Nelson High School | Tina Basinger McKinney High School | Elect new Junior Board Member July 2011 |
| VI | Deborah Mims New Caney High School | Anne Regier J. Frank Dobie High School | Elect new Junior Board Member July 2011 |
| VII | Belinda Salas J. B. Alexander Magnet | Sandra Barron-Herrera James Pace High School | Elect new Junior Board Member July 2011 |
| State Officers | Victoria Abouk- State President -Atascocita High School | | Serves from 4/2010-4/2011 |
| | Tam Nguyen- State P/S Vice President- University of St. Thomas | | |
| | Rachel Walkup- Secondary Vice President -Lamar High School | | |
| | | | |

Revised 7-2010

Area Leadership positions serve two-year terms. The newly elected area representative serves the first year as a Junior Board member. The remaining year of service will be as the Senior Board member. All Areas will elect a new board member each year. State Officers serve a one-year term of office. Ex-officio (non-voting) members of the Board include: Past President, TEA representative, Executive Director, State Advisor, and Postsecondary State Advisor. Resource advisors: Accountant, Health Science Curriculum Specialist.

HOSA, TA Areas



HOSA AFFILIATION PROCESS

1. National HOSA will distribute affiliation packets to local advisors by **September 15**.
If you do not receive a packet, call National HOSA at 1-800-321-HOSA.
2. You must affiliate by the Internet.
 - **Internet** - go to the **HOSA Web Site**: <http://www.hosa.org> and follow the directions.

Before you get into the web site, you will need:

1. A list of all member names and addresses, school address, phone/fax numbers
2. Your five digits National HOSA CHARTER NUMBER
3. Your chapter Internet password (call National HOSA at 1-800-321-4672)

You Must Affiliate by INTERNET.

3. Complete the affiliation process according to the directions.
4. When asking for your **NATIONAL CHARTER NUMBER**, they are asking for the five digit number.
EXAMPLE: Charter Number: 60408
5. Send ONE CHECK made out to NATIONAL HOSA for the national and state affiliation fees:
(state fee \$10.00 + national fee \$10.00 = \$20.00 per Texas member and advisor)
6. Return the HOSA affiliation application & fee payment to: **HOSA Headquarters**
6021 Morriss Road, Suite 110
Flower Mound, TX 75028
7. **The deadline for the Texas Affiliation process is October 30. All chapters who wish to compete in on line testing and area conference MUST be members of National and State HOSA by October 30.** You may do supplemental applications for new students or new spring classes. If new students are participating in area competition, the chapter **supplemental application** must be brought to the Spring Leadership Conference to verify student's membership.
8. While preparing your National Affiliation, please keep in mind that competitive event team members must be a member of the **SAME** chapter. **No switching of members from one chapter to another will be allowed after submission of the chapter affiliation to National HOSA.**

HOSA, TA

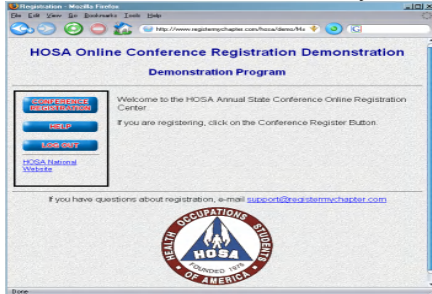
CHAPTER MANAGEMENT PROCESS

In March of 1999, the Texas HOSA Board of Directors approved the following rules regarding chapter membership (secondary or postsecondary/collegiate). Since voting delegate representation and competitive event participation is based on the chapter process, the Board felt the process would promote fairness and more equal representation throughout the state.

1. Students and Advisor must be affiliated with the same school.
2. When the membership reaches forty (40), the advisor may (but is not required) divide the chapter into two (2) chapters of at least 20 members each. Each chapter must affiliate with Nationals, therefore each chapter will have a chapter number and national number.
3. Each chapter must maintain a minimum of twenty (20) members. If membership in either chapter drops below twenty (20) members, the two (2) chapters will revert to one (1).
4. Each secondary advisor may have a maximum of two (2) chapters.

Texas HOSA Online Registration and Instructions

1. In your web browser, go to the link that you were given in your conference memo. If you need to select your area, please do so, then the registration page should appear.
2. Please read all directions carefully



3. Click the **CONFERENCE REGISTRATION** button to begin registration. You will be brought to the log in screen, but if you have never registered before, you'll notice text that says, "**If you have never registered this chapter before, please click [here](#) to add your school**". Click the **here** link to add your school to our database. *If you have registered before, please log in with your previous User Name and Password.* If you add a duplicate school record to the database it could cause additional work for yourself and possibly your state advisor. If you have forgotten your user name and/or password, type in your e-mail address in the blank provided at the bottom of the screen, and click **Submit**. Your user name and password will be e-mailed to you.
4. Click the **ADD NEW NAME** button to add a new name to the list. Provide the participant's last name, first name, and select their status from the drop down list. Click the Submit button (either of them), and the name will be added for you.
5. Continue adding names until you have entered all of your participants. At any point, you may press the **VIEW REGISTRATION** button to get an idea of your total invoice amount, and see who you have registered.
6. When you are finished press the **SUBMIT TO HOSA** button at the bottom. You may be presented with a red error message. For instance, if you forgot to enter an Advisor, a message will appear indicating the error. Click the **Back to Registration** link to go back and add an advisor to the invoice. Once you have done that, click the **SUBMIT TO HOSA** button again.
7. Be sure to **Print** a copy of this invoice to send in with your payment. Next, press the **CONFIRM** button at the bottom to confirm that the invoice is correct. A copy of the invoice will be e-mailed to you and to the administrator.
8. If you need to edit your registration you may come back to this web site as you did above and make changes up until the registration deadline. In order to make changes, click on the **CONFERENCE REGISTRATION** link at the left and log in using your user name and password. The list of registered individuals will appear. Simply click the **Edit** link and make any changes you need. When you do this, remember to press the **SUBMIT TO HOSA** button to check for problems and to resubmit the invoice.
9. Once you are finished with your registration, be sure to either click the **LOG OUT** button to make sure that the connection is securely closed or exit your browser. This will ensure that no one can get in and make changes to your registration.